

# WINGATE RESIDENTIAL 2026



Thursday 7th May- Friday 8th May 2026

MISS N SMITH

TEAM PIKEMERE

# WHY THE WINGATE CENTRE?



Location: Nantwich, Cheshire not too far away from home  
Set in beautiful countryside with safe, secure grounds  
Comfortable dorm-style accommodation  
Specialises in primary school residential experiences

The Wingate Centre is an experienced residential centre that provides safe, inclusive outdoor learning opportunities for primary-aged children.

MISS N SMITH

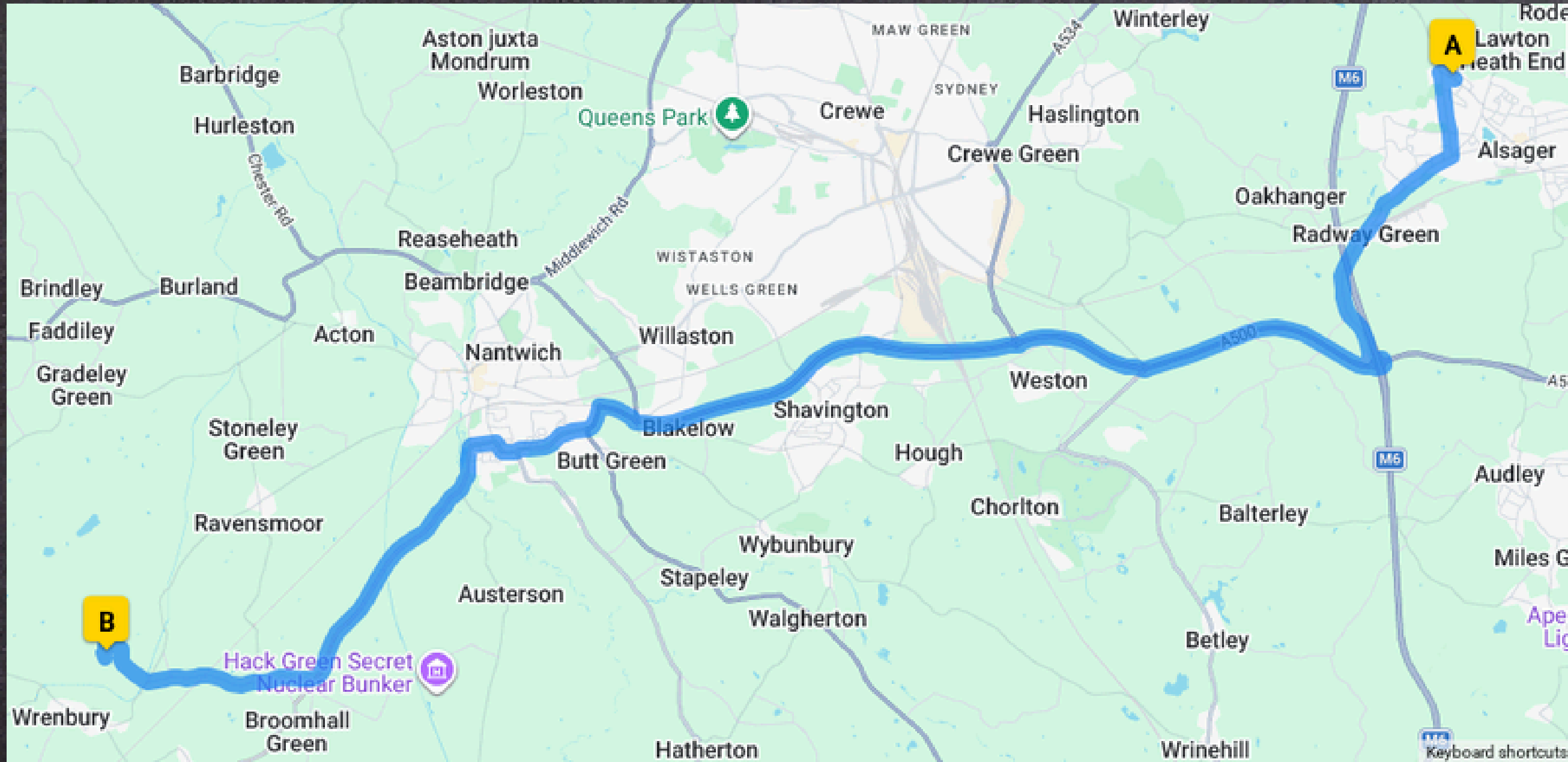
TEAM PIKEMERE



# LOCATION

WHAT3WORDS: ///SPARKS.THE.WINGATE

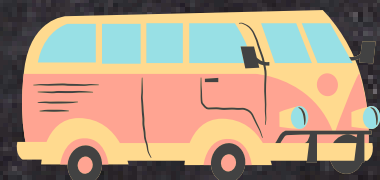
53.0317° N, 2.5996° W



Travel time is approximately 45 minutes via coach to complete the 17 mile trip.

WRENBURY HALL,  
WRENBURY  
NANTWICH  
CW5 8ES

MISS N SMITH

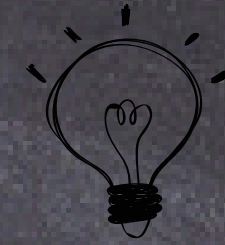


Travel sickness

TEAM PIKEMERE



## WHICH STAFF ARE GOING?



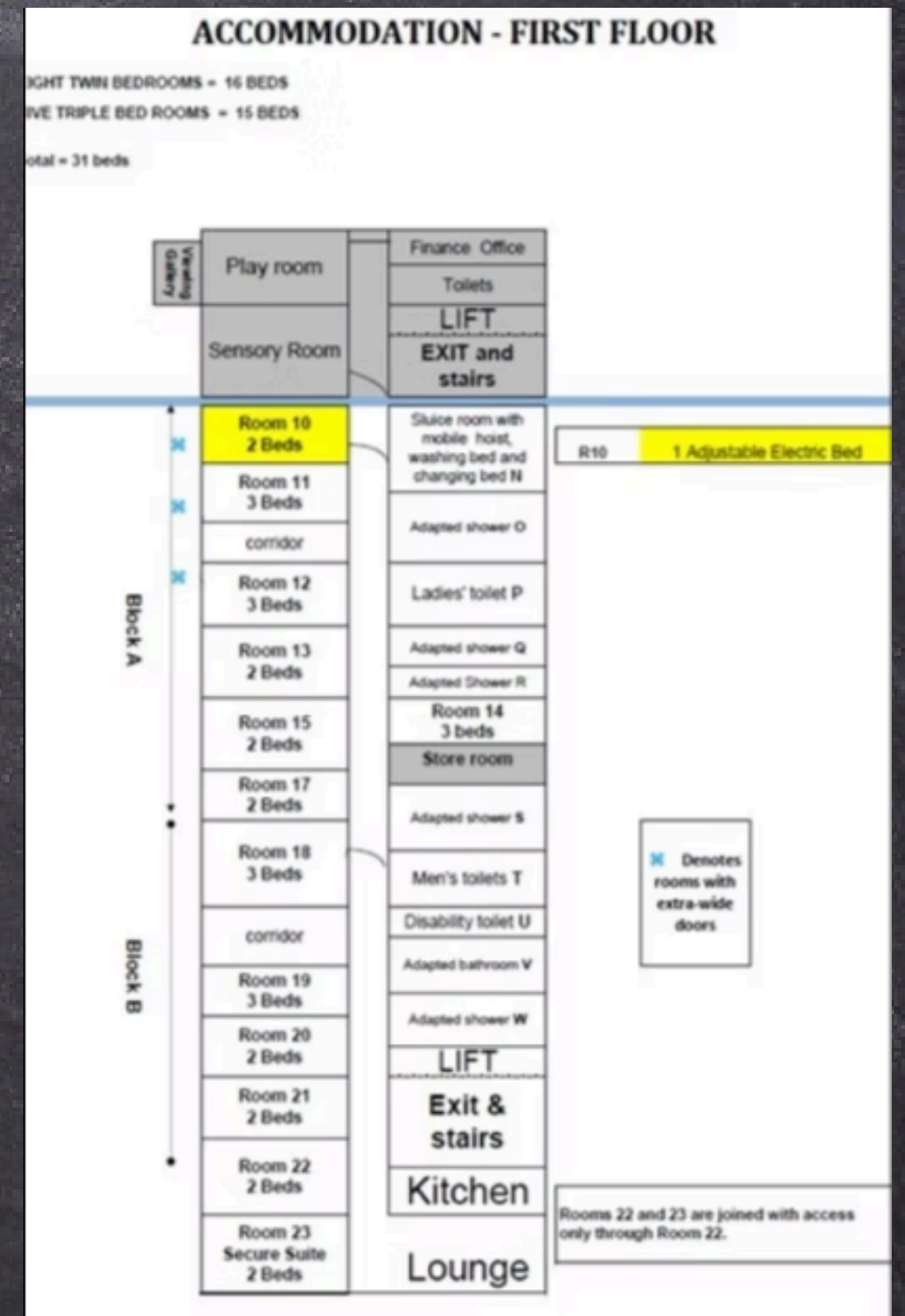
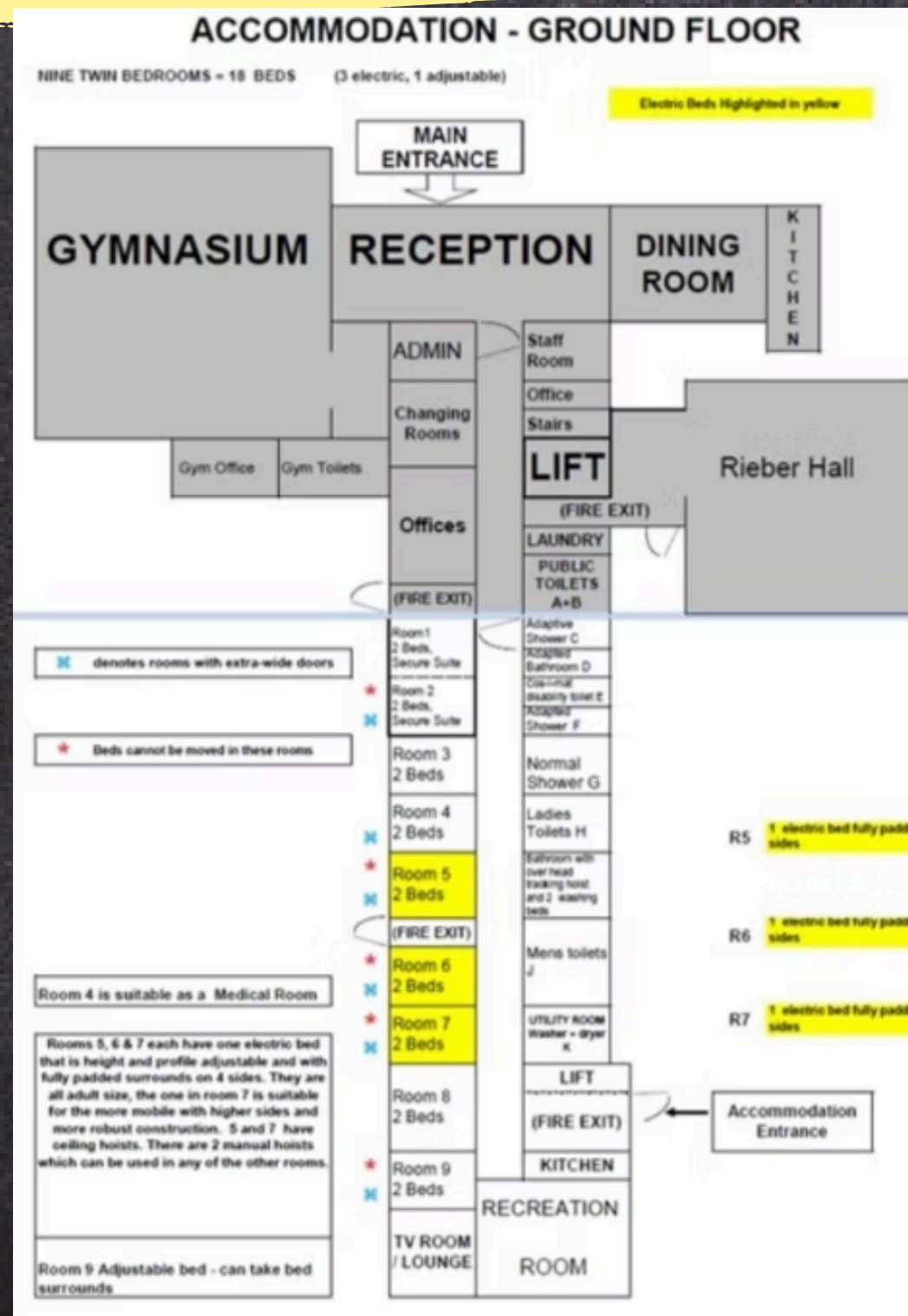
- Miss Smith (First Aider)
- Mrs Weetman (First Aider)
- Mrs Price (First Aider)
- Mr Hughes
- Miss Beresford
- TBC x2



MISS N SMITH

TEAM PIKEMERE

# FLOOR MAP - INDOORS



## SAFETY

- All doors are fire doors
- All doors are alarmed
- Constant checks will be happening throughout the stay

MISS N SMITH

TEAM PIKEMERE

## FACILITIES



The grounds comprise of a large accessible playground with outdoor undercover teaching area, an open playing field and a sensory garden. On the playing field there are 2 football nets and an outdoor storage box with sports and games equipment.

On each floor there is a private lounge with TV and DVD player. They also have a selection of games and sensory toys.

Rieber Hall: This large recreational hall, which is great for playing games and some indoor sports, can also be used for activities like drama, and dance or Arts and Crafts.

# BEDROOMS



Closer to the time, we will give each child the opportunity to choose three people whom they would like to share a room with. They will be placed with at least one of their friends.

## WINGATE 2026

### Bedrooms

I would like to share a room with:

1. ....

2. ....

3. ....



*I know I might not have all 3 friends with me but I know I will have at least 1!*

Pillows, bedlinen and duvets provided.

Children will need to take their own small towel.



## ITINERARY - TBC



- 9.00am Arrive in the hall and hand over any medications
- 9.15am Get on coach with our friends
- 10.00am Arrive at The Wingate Centre
- Snack and toilets and housekeeping information, go to bedrooms and unpack
- 11.00am - 1st activity - Nature hunt
- 12.30pm Outside play
- 1.00pm Picnic lunch outside weather permitting
- 2.00 pm - 2nd activity - Arts and Crafts
- 3.30pm Go to bedrooms and chill!
- 4.30pm Outside play
- 5.30pm Teatime in the dining hall
- 6.30pm Quiet time and get into PJs
- 7.00pm Story time
- 7.30pm-8.00pm Get ready for bed
- 8.30pm Lights out

# ITINERARY



- 8.00am Get up and get dressed
- 8.30am Breakfast
- 9.00am - 3rd Activity - Gym session
- 10.00am Outside play and snack
- 10.30am Pack up cases and strip beds
- 11am Play time
- 12.00pm Packed lunch and outside play
- 1.30pm Load the coach
- 2.00pm Leave to return to school

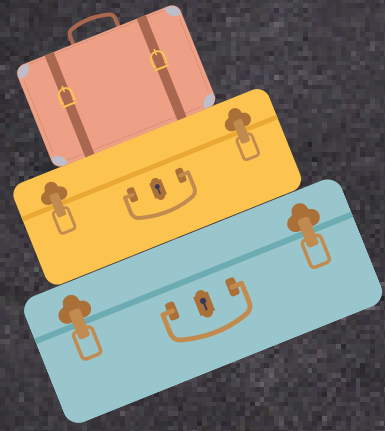


# FOOOD!!!

- Breakfast: Available from 8.15am. This is a self-service buffet comprising of a wide selection of cereals, breakfast pastries and toast and accompanied by yogurt and fruit, and a selection of drinks.
- Lunch: A packed lunch, comprising of a variety of filled rolls/ sandwiches or salad pots and accompanied by crisps, fruit and a sweet snack or cake bar. Drinks are also included within your packed lunch and include fruit drinks and bottled water. Soups, soft pasta, and yoghurts are available for soft eaters.
- Evening meal: Available from 5pm. Our two-course menu will be sent out six weeks before your arrival and will include alternative options.

MISS N SMITH

TEAM PIKEMERE



Children to travel in Pikemere PE kit and trainers.

## KIT LIST



What will you need to take on our trip?

### Clothing

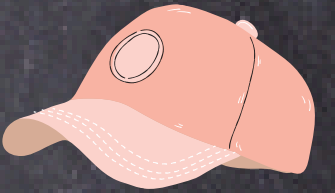
- Waterproof jacket
- Jumper
- 2 T-shirts
- Underwear & Socks
- Comfy trousers, shorts or leggings
- Trainers
- Walking boots or wellies
- Indoor shoes or slippers
- Pyjamas & dressing gown

### Toiletries

- Toothbrush & paste
- Hairbrush/Comb
- Towel
- Soap

### Other

- Suncream
- Reusable water bottle
- Small backpack
- Teddy/Book/Photo
- Sunhat/cap
- Sunglasses

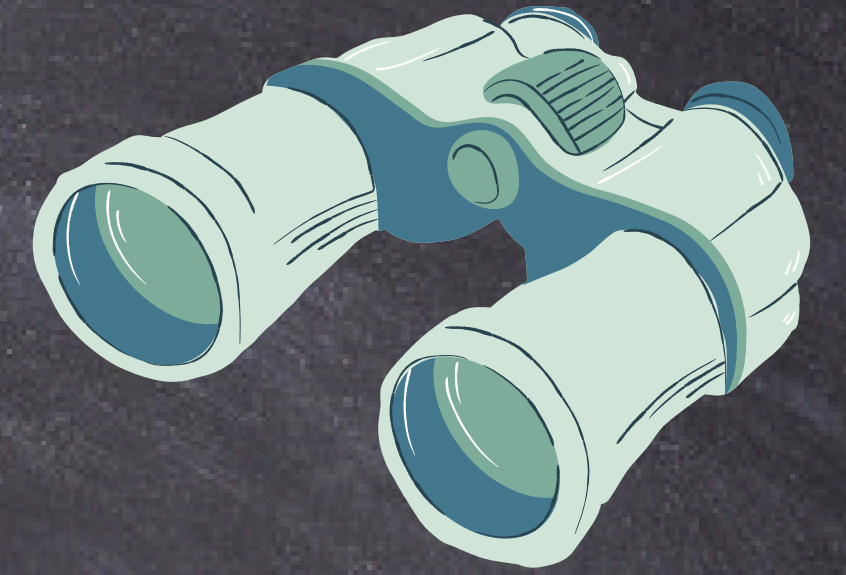


MISS N SMITH

NO ELECTRICALS, PHONES OR SWEETS

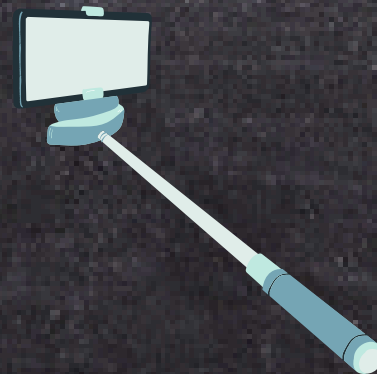
TEAM PIKEMERE

## COMMUNICATION DURING THE TRIP



### Communication during the Trip

- We will send regular updates via Class Dojo
- Photos shared (where consent is given)
- We will carry emergency contact number for parents
- No news is good news – but we will always contact you if needed.

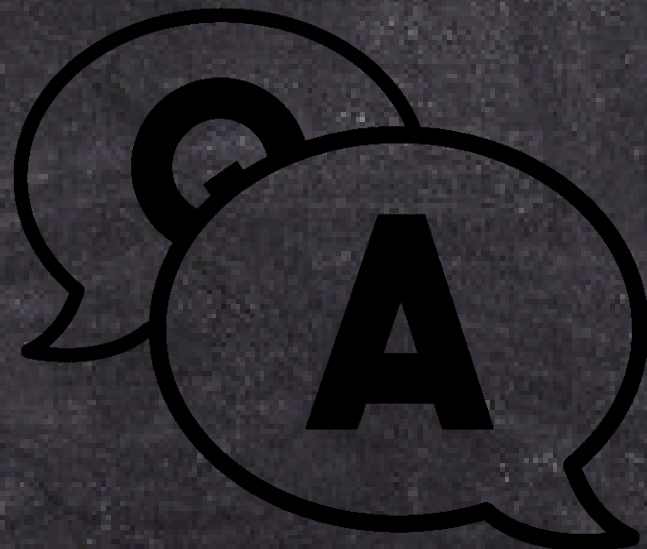




**QUESTIONS?**



**MISS N SMITH**



**TEAM PIKEMERE**